



**Enter and View visit report – Easy Read**

**Bloomfield Court**

7<sup>th</sup> September 2017



## Acknowledgments

Thank you to everyone at Bloomfield Court for letting us visit you.

## Visiting Team



Khush

Brenda

Anita

Ian

Melissa

(This document does not constitute an official Healthwatch Sandwell Enter and View report. It is produced for information purposes only)

# Why we visited



To see how you are looked after



To talk to you



See how you and the staff get on



Talk to the staff

## What we found

- You are well looked after
- Food and Activities are good
- Staff are well trained and dedicated
- Relatives are Happy

## We think

Bloomfield Court is a good place to live and the staff do a good job

# Results of Visit

## Residents

There are 44 residents.

We spoke to 9 - who like



Being in the  
Garden



A Sing-Song



Jigsaws

## Staff



There met 3  
members of staff



Staff are  
well trained



Staff  
are happy

## Environment



The building is very nice and has a good garden



The home is clean and tidy

## Privacy



Residents have their own rooms with bathrooms, TVs etc.

# Getting Involved



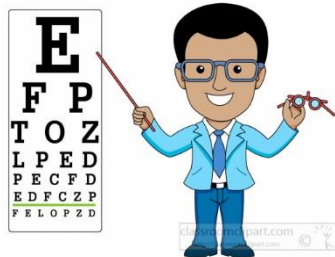
Residents have regular meetings

# Ongoing Medical Care



Copyright © Chud Tsankov · www.HitToon.com/223238

Residents go to the GP or the GP visits the home



You also get to see the optician

# Needs and Care



Your relatives are involved with your care

# Food



There is a very good choice of food



Residents are not interrupted at meal times



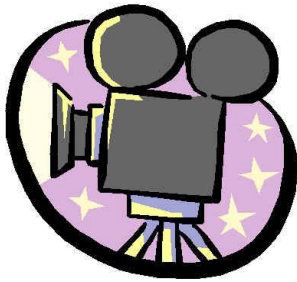
## Activities



Visits to the Black Country Museum



Trips Out



Film Afternoons



Thank you, Bloomfield Court, for letting us visit you

## What is Enter and View

Healthwatch can visit to see how people are looked after

We work with

- The Council
- The NHS
- Other groups

Our office is in Tipton

We help people to have their say